

STONE



*Whitepost Hill RH1*

Offers over £550,000

*“At Stone, we’re passionate about  
the unique and awe-inspiring  
architectural elements that transform  
houses into dream homes.”*

---

*The Stone Family*





Tucked along the winding lane of Whitepost Hill, this enchanting semi-detached period cottage exudes character and charm, offering a quintessential Surrey lifestyle just moments from Redhill's bustling town centre.

Painted in a soft, timeless hue, with elegant sash windows and a traditional side entrance, this home is the very definition of period appeal. As you approach, the far-reaching views unfold before you, stretching across the undulating landscape, while just opposite, a large open green spills effortlessly into Redhill Common - an idyllic expanse perfect for morning strolls, weekend picnics, or quiet contemplation beneath the trees.

It's the kind of setting that feels like a countryside retreat yet enjoys all the conveniences of urban living nearby.







Inside, the home's warmth and heritage are undeniable. Two beautifully linked reception rooms create an inviting flow, with a working fireplace in the front room providing the perfect spot to unwind as the seasons shift.

The modernised kitchen blends contemporary convenience with period elegance, ensuring both function and style. The family bathroom, also thoughtfully updated, boasts underfloor heating—a luxurious addition that enhances the home's sense of comfort and sophistication.

Original details whisper the home's history, while modern touches ensure comfort without compromising character. Upstairs, three well-proportioned bedrooms span the two upper floors, each bathed in natural light, offering restful retreats with charming outlooks over the surrounding greenery.













Step outside into the sun-trap garden, a private oasis where mature planting creates a lush, verdant backdrop. A striking palm tree adds an unexpected yet delightful touch, reinforcing the home's tranquil, almost holiday-like atmosphere. Whether dining al fresco, enjoying a morning coffee, or simply soaking in the quiet serenity, this garden offers a perfect escape from the everyday.

With the added rarity of off-road parking, practicality meets charm in this sought-after location. Here, you are mere moments from Redhill's excellent transport links, vibrant amenities, and the charming high street of Reigate beyond. Yet, in this peaceful pocket of Whitepost Hill, life moves at a gentler pace, where picturesque surroundings, historic character, and modern comforts blend seamlessly to create an irresistible place to call home.



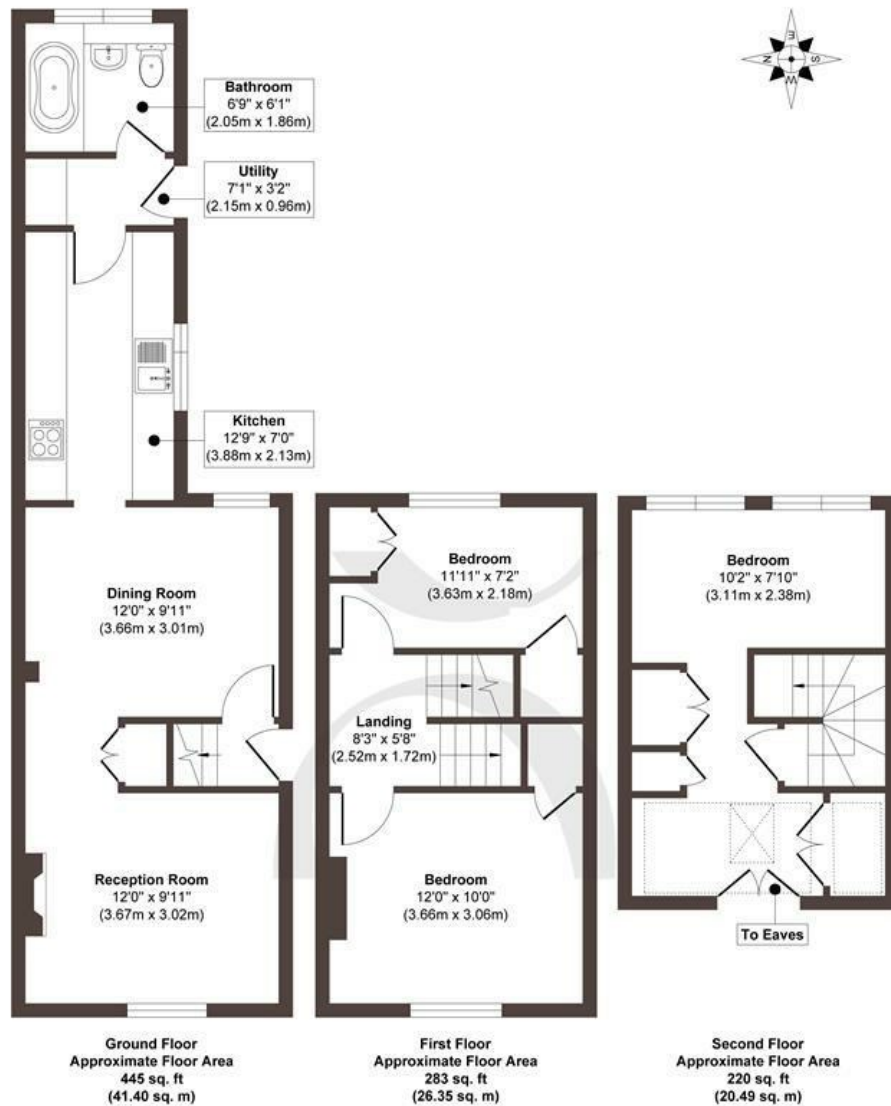












**Approx. Gross Internal Floor Area 948 sq. ft / 88.24 sq. m**

Illustration for identification purposes only, measurements are approximate, not to scale.

Produced by Elements Property

**STONE**

## The Details

- Perfectly positioned at the Redhill/Reigate border in a serene setting
- No onward chain
- Three well-proportioned bedrooms, each enjoying far-reaching views
- Second reception leads to a contemporary kitchen
- The beautiful rear garden is a verdant haven
- 14 minute walk to Redhill train station
- 28 minute walk into Reigate town centre
- 
- 

Size  
Approx 948.00 sq ft

Energy Performance Certificate (EPC)  
Rating D

Council Tax Band  
E





# STONE

## Let's *Talk*

01737 301 557

[hello@stoneestateagents.co.uk](mailto:hello@stoneestateagents.co.uk)

[stoneestateagents.co.uk](https://stoneestateagents.co.uk)

The particulars above are a guide, not an offer or contract. Descriptions photographs and plans are not statements or representations of fact. Measurements are approximate and not to scale. Prospective purchasers must verify the accuracy of the information within the particulars. Stone does not give any representations or warranties; nor represent the Seller legally. Stone has no liability, for any costs, losses or expenses incurred by the Seller or a prospective buyer relating to the sales and buying transaction. Our Sales Disclaimer, trading names and privacy policy on how your data is processed and used is found in full on our website in our Privacy Statement.

© Stone Estate Agents 2023 All rights Reserved